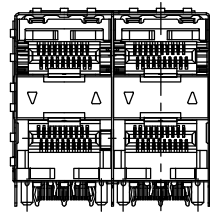
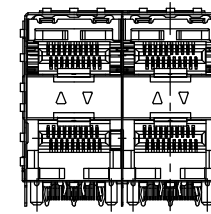


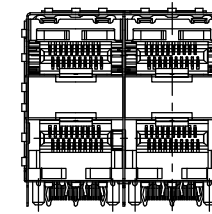
WITH INNER/OUTTER LIGHT PIPES PART NUMBER: SFP A -PTE2211



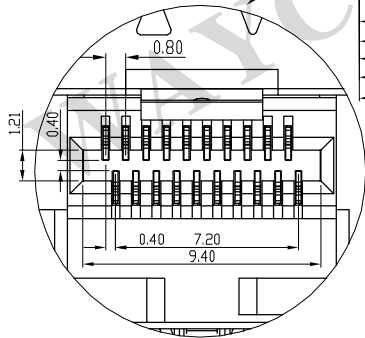
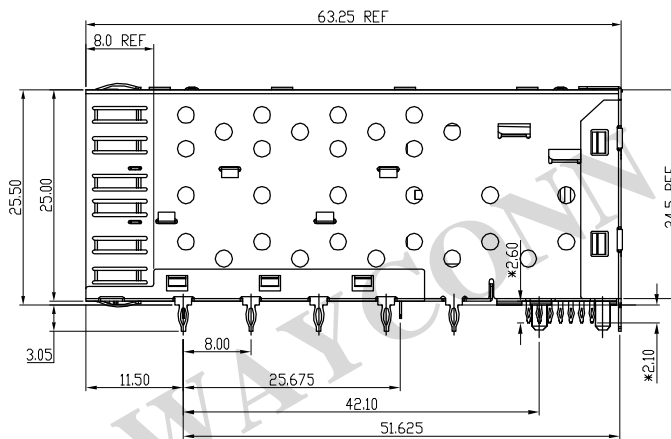
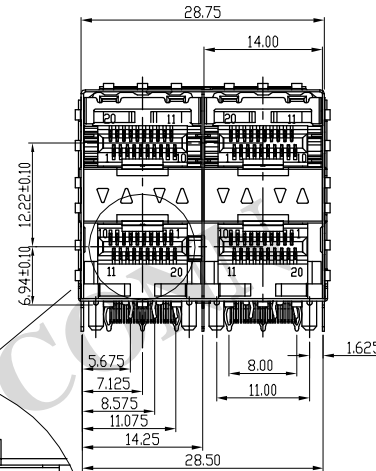
WITHOUT LIGHT PIPES PART NUMBER: SFP A -PTE2201



WITH OUTER LIGHT PIPES PART NUMBER: SFP A -PTE2212



WITH INNER LIGHT PIPES PART NUMBER: SFP A -PTE2213



ENVIRONMENTAL:

1. LOW LEVEL CONTACT RESISTANCE(LLCR): 10 MILLIOHMS MAXIMUM FOR SHIELD AND SIGNAL CONTACTS.
2. WITHSTANDING VOLTAGE: 300V AC/MAX.
3. INSULATION RESISTANCE: 1X10⁹ OHMS MINIMUM.
4. RATINGS CURRENT: SIGNAL APPLICATION ONLY.
5. RATINGS VOLTAGE: 120 volts AC.
6. OPERATION: -40°C TO +85°C
7. STORAGE: -55°C TO +105°C

MATERIAL

1. CONTACT: PHOSPHOR BRONZE C5210-EH T=0.20mm
2. CONNECTOR HOUSING: LCP UL 94V-0. COLOR: BLACK
3. MOULDED INSET: HIGH TEMPERATURE PLASTIC UL 94V-0. COLOR: BLACK
4. CAGE: COPPER ALLOY C7701 T=0.25
5. LIGHT PIPES: POLYCARBONATE. UL 94V-0. COLOR: CLEAR
6. LIGHT PIPE HOUSING: PBT+20%.G.F. UL 94V-0 COLOR: BLACK.

PLATED:

1. CONTACT MATING AREA: GOLD 0.38 MICROMETERS MINIMUM OVER 1.27 MICROMETERS MINIMUM NICKEL.
2. CONTACT NEEDLE EYE: 1.27 MICROMETERS MINIMUM MATTE TIN OVER 1.27 MICROMETERS MINIMUM NICKEL.

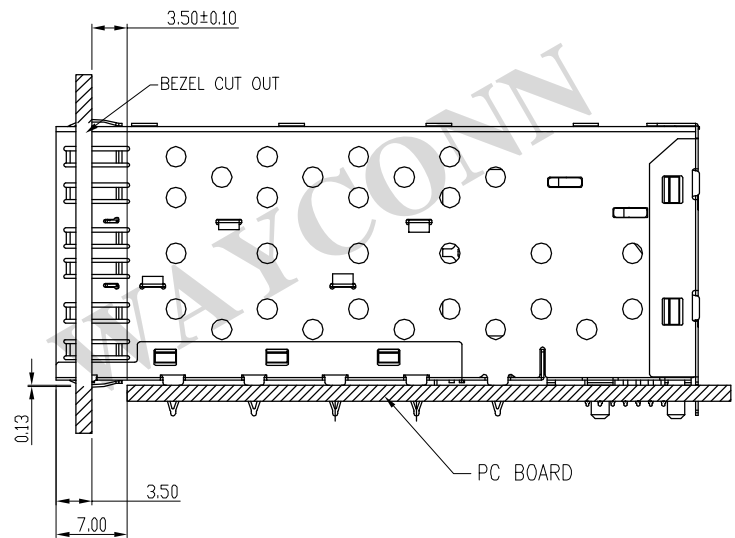
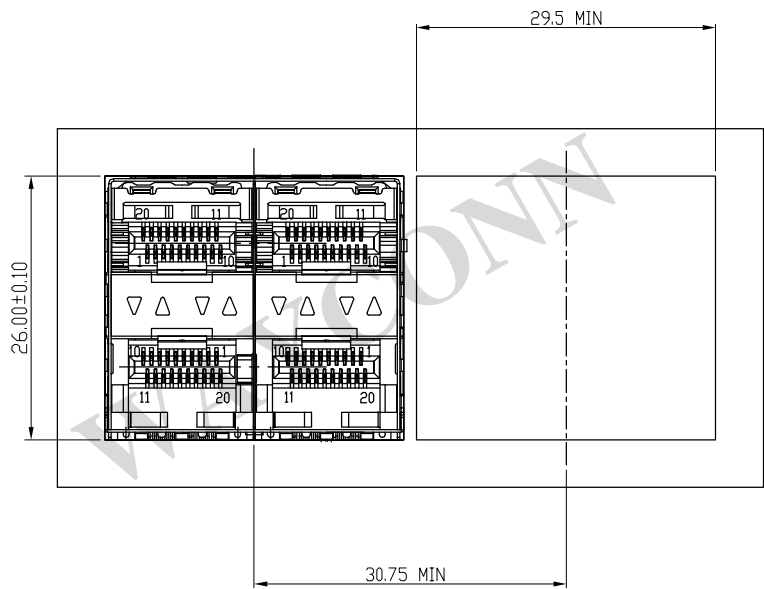
MECHANICAL REQUIREMENT:

1. DURABILITY: 100 CYCLES MIN.
2. INSERTION AND EXTRACTIN FORCE: 40N MAX & 11.50N MAX

SFP A-PT E 22 X X

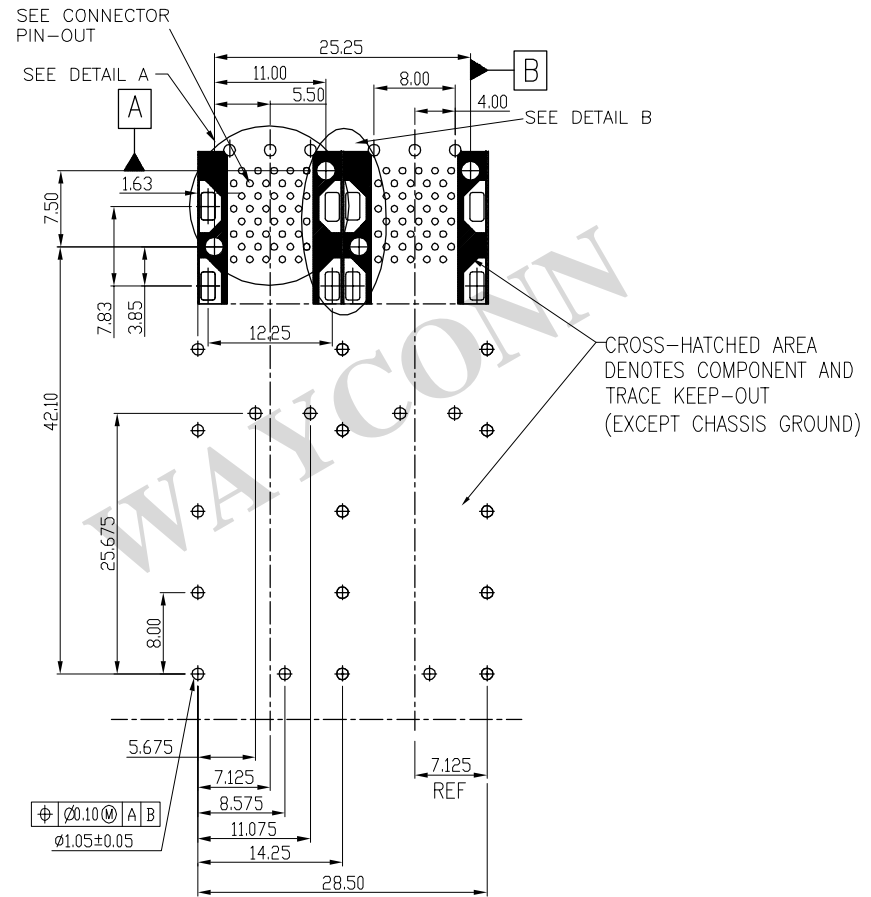
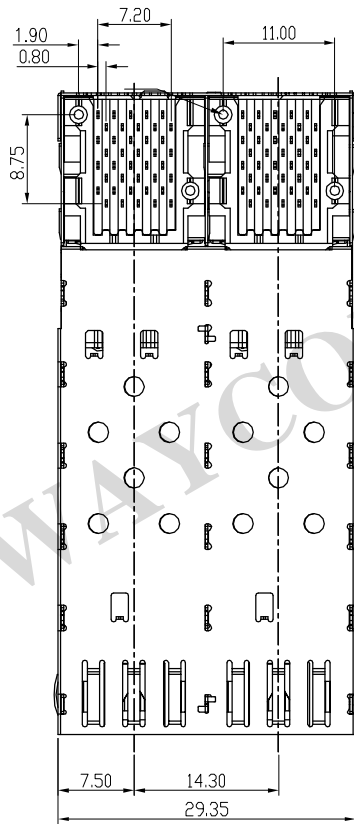
SFP - CATEGORY
 A: PRODUCT - CAGE
 PT: PRESS-FIT
 E: w/ EMI TAB
 1: SERIES No.
 0: w/o LIGHT PIPE; 1: w/ LIGHT PIPE
 22: Nos. OF PORTS - 2X2

GENERAL TOLERANCE	PROJECTION		TITLE	SFP CAGE 2X2	
	.X ±0.20 .XX ±0.15 .XXX ±0.10 ANGLES ±0.5	UNITS	mm	PRESS-FIT, W/ & W/O LIGHT PIPES	
SCALE	1:1	SHEET SIZE	A4	P/N:	SFP A-PTE22XX
SHEET	1 OF 1	WAYCONN ELECTRONICS			



BEZEL CUT-OUT CENTER SPACING DETAIL
BEZEL THICKNESS:0.8-2.6

GENERAL TOLERANCE .X ± 0.20 .XX ± 0.15 .XXX ± 0.10 ANGLES ± 0.5	PROJECTION		TITLE	SFP CAGE 2X2
	UNITS	mm		PRESS-FIT, W/ & W/O LIGHT PIPES
	SHEET SIZE	A4	P/N:	SFPA-PTE22XX
	WAYCONN ELECTRONICS			
SCALE	1:1			
SHEET	1 OF 1			



GENERAL TOLERANCE .X ±0.20 .XX ±0.15 .XXX ±0.10 ANGLES ±0.5	PROJECTION		TITLE	SFP CAGE 2X2
	UNITS	mm		PRESS-FIT, W/ & W/O LIGHT PIPES
	SHEET SIZE	A4	P/N:	SFPA-PTE22XX
	SCALE	1:1	WAYCONN ELECTRONICS	
SHEET	1 OF 1			

