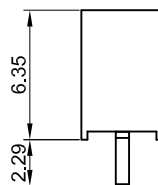
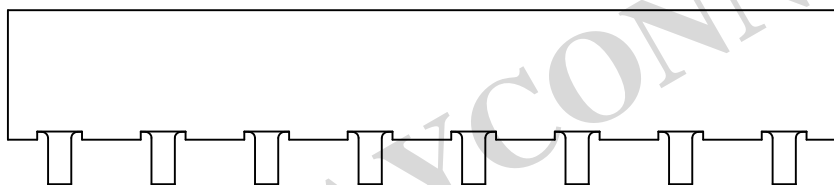
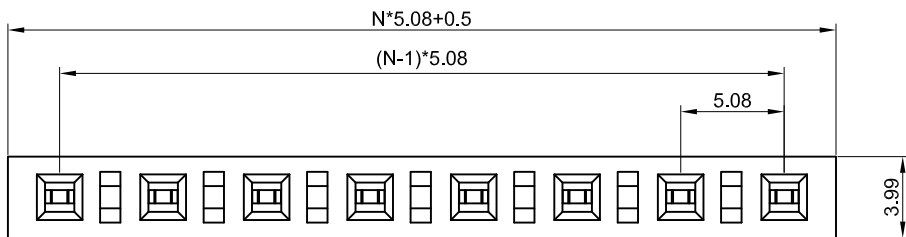
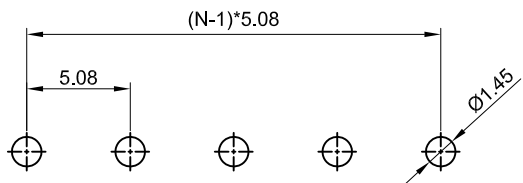


N:NUMBER OF CONTACTS/2



PIN0.64*1.14



RECOMMEND PCB LAYOUT
(TOLERANCE=±0.05)

1. MATERIAL

- 1.1 INSULATOR: THERMOPLASTIC (UL 94V-0).
- 1.2 CONTACT MATERIAL: COPPER ALLOY.

2. SPECIFICATION

- 2.1 CURRENT RATING: 7.0 Amp.
- 2.2 INSULATION RESISTANCE: 1000mΩ Min.
- 2.3 DIELECTRIC WITHSTANDING: 1000VAC.
- 2.4 CONTACT RESISTENCE: 30mΩ Max.
- 2.5 OPERATING TEMPERATURE: -40°C TO +105°C.

3. PLASTIC WITHSTAND TEMP

- 3.1 MAX PROCESSING TEMP:
180°C FOR 30-60 SEC.; (200°C FOR 5-10 SEC.) - PBT
230°C FOR 30-60 SEC.; (260°C FOR 5-10 SEC.) - PA6T

FH 508 - XXX - X X X GX

<u>Gender</u> P=Pin Header F=Female Header	<u>Contact Plating</u> G0: Gold Flash G2: 1U" Gold G3: 3U" Gold G4: 5U" Gold G5: 10U" Gold G6: 15U" Gold Gold SN: Tin
<u>Pitch</u> 1.27=127 2.00=200 2.54=254 3.96=396 5.08=508	<u>Packing Style</u> 1. Loose in Bag 2. Tape & Reel 3. Tube
<u>No. of PINS</u> 1 x 01 ~ 1 x 40 PINS 2 x 01 ~ 2 x 40 PINS 3 x 01 ~ 3 x 40 PINS	<u>Insulator Material</u> 1: PBT 2: PA6T 3: PA9T 4: LCP
<u>Connector Type</u> S=Straight R=Right Angle M=SMT	

PRODUCT TITLE:	5.08mm Pin Header, Straight, Single Row, H: 6.35mm		
UNLESS OTHERWISE SPECIFIED TOLERANCES	SCALE: 1/1	UNIT: mm	
	SIZE: A3	PAGE: 1 OF 1	
DECIMALS: X :±0.5 X.X :±0.3 X.XX :±0.2 ANGLES: X :±6° X.X :±3° X.XX :±2°	WAYCONN ELECTRONICS		