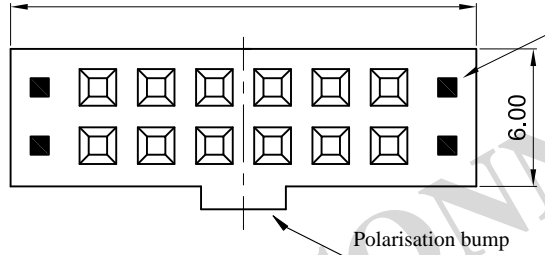
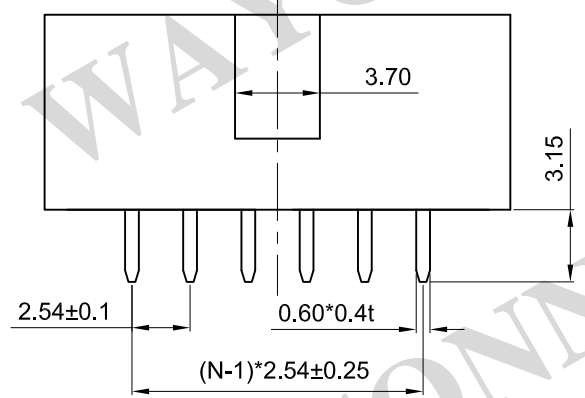


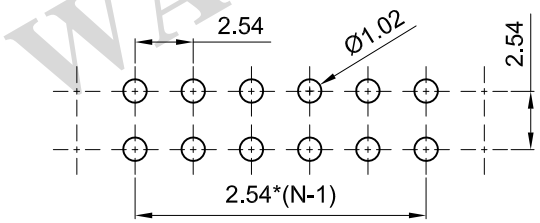
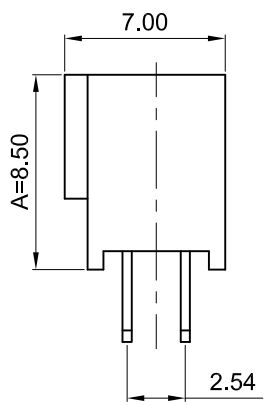
2.54*N+4.98±0.3 Both Ends Blocked



Mating with Box Header



N=No.OF CONTACTS/2



RECOMMEND PCB LAYOUT (TOLERANCE=±0.05)

1. MATERIAL

- 1.1 INSULATOR: THERMOPLASTIC (UL 94V-0).
- 1.2 CONTACT MATERIAL: COPPER ALLOY.

2. SPECIFICATION

- 2.1 CURRENT RATING: 3.0 Amp.
- 2.2 INSULATION RESISTANCE: 1000mΩ Min.
- 2.3 DIELECTRIC WITHSTANDING: 600VAC.
- 2.4 CONTACT RESISTENCE: 20mΩ Max.
- 2.5 OPERATING TEMPERATURE: -40°C TO +105°C.

3. PLASTIC WITHSTAND TEMP

- 3.1 MAX PROCESSING TEMP:
180°C FOR 30-60 SEC; (200°C FOR 5-10 SEC.) - PBT
230°C FOR 30-60 SEC; (260°C FOR 5-10 SEC.) - PA6T

FH 254 - XXX - XXX GX

Gender	Plating
P=Pin Header	G0: Gold Flash
F=Female Header	G2: 1U" Gold
	G3: 3U" Gold
	G4: 5U" Gold
	G5: 10U" Gold
	G6: 15U" Gold
	SN: Tin
Pitch	Packing Style
0.80=080	1. Loose in Bag
1.00=100	2. Tape & Reel
1.27=127	3. Tube
2.00=200	
2.54=254	
No. of PINS	Insulator Material
1 x 01 ~ 1 x 40 PINS	1: PBT
2 x 01 ~ 2 x 40 PINS	2: PA6T
3 x 01 ~ 3 x 40 PINS	3: PA9T
	4: LCP
Connector Type	
S= Straight	
R= Right Angle	
M= SMT	

PRODUCT TITLE:	2.54mm Female Header with Bump, Straight, Dual Row		
UNLESS OTHERWISE SPECIFIED TOLERANCES	SCALE: 1/1	UNIT: mm	 FH254-2XX-SXXG0-02
	SIZE: A3	PAGE: 1 OF 1	
DECIMALS:	ANGLES:	WAYCONN ELECTRONICS	
X : ±0.5	X : ±6°		
X.X : ±0.3	X.X : ±3°		
X.XX : ±0.2	X.XX : ±2°		