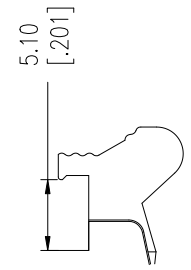
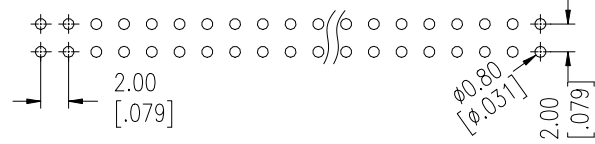


- 1. MATERIAL**
- 1.1 INSULATOR: POLYESTER (UL 94V-0); STANDARD: PA9T
  - 1.2 CONTACT MATERIAL: COPPER ALLOY.
  - 1.3 CONTACT PLATING: Au or Sn Over Ni
- 2. SPECIFICATION**
- 2.1 CURRENT RATING: 2.0 Amp.
  - 2.2 INSULATION RESISTANCE: 1000mΩ Min.
  - 2.3 DIELECTRIC WITHSTANDING: 500VAC.
  - 2.4 CONTACT RESISTENCE: 20mΩ Max.
  - 2.5 OPERATING REMPERATURE: -40°C TO +105°C.

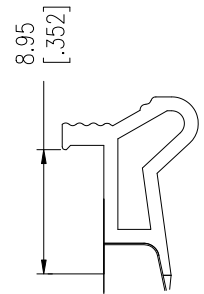
**EH 200 - XXX - X X X GX**

<b>Category</b> B=Box Header	<b>Plating Standard: G0</b> G0: Gold Flash G2: 1U" Gold G3: 3U" Gold G4: 5U" Gold G5: 10U" Gold G6: 15U" Gold Gold SN: Tin
<b>Pitch</b> 0.80=080 1.00=100 1.27=127 2.00=200 2.54=254	<b>Packing Style</b> 1. Tray 2. Tape & Reel 3. Tube
<b>No. of PINS</b> 2 x 05 ~ 2 x 32 PINS	<b>Insulator Material</b> 1: PBT 2: PA6T 3: PA9T 4: LCP
<b>Connector Type</b> S=Straight R=Right Angle M=SMT	

Recommended P.C.B Layout(Top Side)  
(PCB BOARD TOLERANCE±0.05)



Short Latch  
(L=17.00)



Long Latch  
(L=20.85)

<b>PRODUCT TITLE:</b> 2.00mm Pitch Ejector Header, Vertical, Thru-Hole	
<b>UNLESS OTHERWISE SPECIFIED TOLERANCES</b>	SCALE: 1/1 UNIT: mm
	SIZE: A3 PAGE: 1 OF 1 RAV.A01
<b>DECIMALS:</b> X :±0.5 X.X :±0.3 X.XX :±0.2	<b>ANGLES:</b> X :±6° X.X :±3° X.XX :±2°
<b>WAYCONN ELECTRONICS</b>	